







# The infiltration treatment consists of 3 easy steps:

## 1. ICON ETCH: Prepare the surface

Apply the HCl-Gel to the affected area with our special applicator tip, removing the pseudo-intact surface layer. Once this layer has been removed, the infiltrant can penetrate into the pore system of the tooth.

## 2. ICON DRY

The lesion is dried with Icon Dry (ethanol) and air to offer a protective final coat.

## 3. ICON INFILTRANT

The low viscosity infiltrant is applied and penetrates deep into the enamel through capillary action. It is then light-cured for 40 seconds each, on all sides.

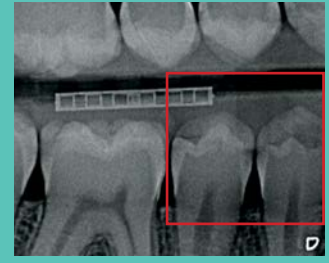
The infiltrated lesion has similar mechanical and visual properties to healthy enamel.



## ICON PROXIMAL



Initial clinical situation.



Bitewing X-ray.



Separation with dental wedge.



Etching.



Drying.



Infiltrating.

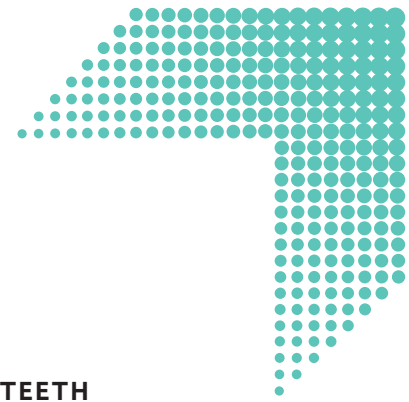


Removal of excess.



Light-curing.

# Tips from the practice:



## EXACT DIAGNOSIS WITH BITEWING X-RAYS

- › Make use of bitewing x-rays for early diagnosis of proximal lesions.
- › Check the necessity of x-ray images in advance, for example through the use of fiber-optic transillumination devices.

## DOCUMENTATION IN PATIENT RECORDS

- › Icon is not radiopaque.
- › Certain filler materials are necessary to make it radiopaque, which negatively affect the infiltrant's flow properties, and therefore its penetrative ability.
- › In order to document the procedure properly, the patient card included in every package should be marked and filed appropriately.

## PROPERLY SEPARATE THE TEETH

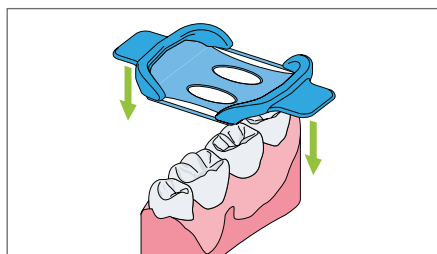
- › It is best to proceed slowly with the tooth separation, a bit like stretching out a muscle. The tissue has to respond to the increase in pressure.
- › Insert the wedge between the teeth until you feel resistance. Hold the wedge in position for several seconds. Softly push the wedge further until the widest part of the wedge creates enough separation between the teeth.
- › Alternatively, orthodontic rubber rings (separating rubber) can also be used for separation. These should be placed one hour to one day before the infiltration treatment.

## DRY WORKING FIELD

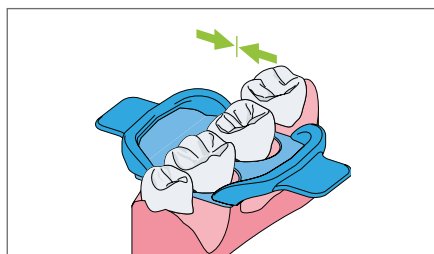
- › Sufficiently drying the area is critical and easily achieved within seconds with the DMG MiniDam.
- › The silicone protection can be quickly applied by just one person and stabilizes itself – without clamps.



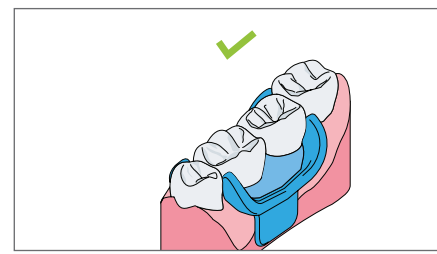
# Quick Protection – Where it’s needed: DMG MiniDam



Stretch the DMG MiniDam and pull towards the gingiva.



Release the DMG MiniDam and fold cervically.



The DMG MiniDam stays in place securely without clamps.

## LOCAL PROTECTION AND DRYNESS

The DMG MiniDam protects the proximal region during treatment – quickly, easily and comfortably for patients. The practical silicone auxiliary ensures that the site being treated is sufficiently dry. At the same time, the gingiva is protected from the materials being used, i.e. etching gel.



## SECURE QUICKER

The DMG MiniDam can be placed by one person in just a few seconds and stabilizes itself – without clamps – making it extremely convenient for the dentist and comfortable for the patient. The material is latex-free and therefore harmless for allergy sufferers.

Thanks to the DMG MiniDam, procedures in the proximal area that also include caries infiltration, can be completed more quickly.

# Ordering Information

Item#	Product	Contents
220400	Icon Proximal Mini Kit	2 Patient Packs each including: 1-0.30ml Syringe Icon Etch 1-0.45ml Syringe Icon Dry 1-0.45ml Syringe Icon Infiltrant 6 Proximal Tips 1 Luer-Lock Tip 4 Dental Wedges
220401	Icon Proximal Cube	7 Patient Packs each including: 1-0.30ml Syringe Icon Etch 1-0.45ml Syringe Icon Dry 1-0.45ml Syringe Icon Infiltrant 6 Proximal Tips 1 Luer-Lock Tip 4 Dental Wedges
220381	DMG MiniDam	20 Pieces

DMG America, LLC  
65 Challenger Road, Suite 340, Ridgely Park, NJ 07660  
tel: 800.662.6383 email: info@dmg-america.com  
web: www.dmg-america.com

